

Oil & natural gas extraction data

Richard Heede
Climate Mitigation Services
File started: 11 January 2005
Last modified: January 2020

Copyright Climate Accountability Institute

Libya National Oil Corporation

www.noc.ly

Tripoli

yellow column indicates original reported units
100% State-owned enterprise

Production / Extraction data

Year	Crude Oil & NGL			Natural Gas		
	Net production	Net production	Net production	Net production	Net production	Net production
	Thousand bbl /d	Million bbl /yr	Million bbl /yr	Billion cf/yr	Tcf/yr	Billion cf/yr

Libya NOC established in 1970; Libya nationalized petroleum industry in 1973



- 17 1950
- 18 1951
- 19 1952
- 20 1953
- 21 1954
- 22 1955
- 23 1956
- 24 1957
- 25 1958
- 26 1959
- 27 1960
- 28 1961
- 29 1962
- 30 1963
- 31 1964
- 32 1965
- 33 1966
- 34 1967
- 35 1968
- 36 1969
- 37 1970
- 38 1971
- 39 1972
- 40 1973
- 41 1974
- 42 1975
- 43 1976
- 44 1977
- 45 1978
- 46 1979
- 47 1980
- 48 1981
- 49 1982
- 50 1983
- 51 1984
- 52 1985
- 53 1986
- 54 1987
- 55 1988
- 56 1989
- 57 1990
- 58 1991
- 59 1992
- 60 1993
- 61 1994
- 62 1995
- 63 1996
- 64 1997
- 65 1998
- 66 1999
- 67 2000
- 68 2001
- 69 2002
- 70 2003
- 71 2004
- 72 2005
- 73 2006
- 74 2007
- 75 2008
- 76 2009
- 77 2010
- 78 2011
- 79 2012
- 80 2013
- 81 2014
- 82 2015
- 83 2016
- 84 2017
- 85 2018
- 86 2018

Year	Libya		Libya NOC		Percent of Libya
	million bbl /yr	million bbl /yr	million bbl /yr	million bbl /yr	
1961	7	1	7	1	10%
1962	67	7	67	7	10%
1963	169	17	169	17	10%
1964	316	32	316	32	10%
1965	445	45	445	45	10%
1966	550	55	550	55	10%
1967	633	63	633	63	10%
1968	949	95	949	95	10%
1969	1,134	113	1,134	113	10%
1970	1,225	245	1,225	245	20%
1971	1,004	301	1,004	301	30%
1972	821	328	821	328	40%
1973	807	412	807	412	51%
1974	569	313	569	313	55%
1975	553	332	553	332	60%
1976	720	468	720	468	65%
1977	769	539	769	539	70%
1978	738	517	738	517	70%
1979	781	547	781	547	70%
1980	1,827	667	1,827	667	70%
1981	1,175	429	1,175	429	70%
1982	1,190	434	1,190	434	70%
1983	1,135	414	1,135	414	70%
1984	1,124	410	1,124	410	70%
1985	1,085	396	1,085	396	70%
1986	1,064	388	1,064	388	70%
1987	1,002	366	1,002	366	70%
1988	1,205	440	1,205	440	70%
1989	1,185	433	1,185	433	70%
1990	1,410	515	1,410	515	70%
1991	1,523	556	1,523	556	70%
1992	1,473	538	1,473	538	70%
1993	1,402	512	1,402	512	70%
1994	1,419	518	1,419	518	70%
1995	1,430	522	1,430	522	70%
1996	1,450	529	1,450	529	70%
1997	1,506	550	1,506	550	70%
1998	1,450	529	1,450	529	70%
1999	1,379	503	1,379	503	70%
2000	1,470	537	1,470	537	70%
2001	1,429	521	1,429	521	70%
2002	1,384	505	1,384	505	70%
2003	1,486	542	1,486	542	70%
2004	1,583	578	1,583	578	70%
2005	1,740	635	1,740	635	70%
2006	1,865	681	1,865	681	70%
2007	1,931	705	1,931	705	70%
2008	1,943	709	1,943	709	70%
2009	1,836	670	1,836	670	70%
2010	1,850	675	1,850	675	70%
2011	522	191	522	191	70%
2012	1,549	565	1,549	565	70%
2013	1,045	381	1,045	381	70%
2014	577	211	577	211	70%
2015	514	188	514	188	70%
2016	501	183	501	183	70%
2017	932	340	932	340	70%
2018	1,075	392	1,075	392	70%

Year	Libya		Libya NOC		Percent of Libya
	gross gas prod'n Bcf/yr	net gas prod'n Bcf/yr	gross gas prod'n Bcf/yr	net gas prod'n Bcf/yr	
1961	na	na	na	na	10%
1962	620	na	620	na	10%
1963	667	na	667	na	10%
1964	na	na	na	na	10%
1965	685	10	685	10	20%
1966	557	24	557	24	30%
1967	496	95	496	95	40%
1968	563	152	563	152	51%
1969	425	137	425	137	55%
1970	489	155	489	155	60%
1971	620	160	620	160	65%
1972	na	169	na	169	70%
1973	na	172	na	172	70%
1974	na	228	na	228	70%
1975	na	180	na	180	70%
1976	na	110	na	110	70%
1977	na	120	na	120	70%
1978	na	140	na	140	70%
1979	na	162	na	162	70%
1980	na	180	na	180	70%
1981	na	198	na	198	70%
1982	na	189	na	189	70%
1983	na	194	na	194	70%
1984	na	212	na	212	70%
1985	na	219	na	219	70%
1986	na	231	na	231	70%
1987	na	239	na	239	70%
1988	na	225	na	225	70%
1989	na	226	na	226	70%
1990	na	224	na	224	70%
1991	na	227	na	227	70%
1992	na	232	na	232	70%
1993	na	225	na	225	70%
1994	na	226	na	226	70%
1995	na	224	na	224	70%
1996	na	227	na	227	70%
1997	na	232	na	232	70%
1998	na	225	na	225	70%
1999	na	184	na	184	70%
2000	na	212	na	212	70%
2001	na	218	na	218	70%
2002	na	219	na	219	70%
2003	na	194	na	194	70%
2004	na	285	na	285	70%
2005	na	399	na	399	70%
2006	na	466	na	466	70%
2007	na	540	na	540	70%
2008	na	562	na	562	70%
2009	na	562	na	562	70%
2010	na	594	na	594	70%
2011	na	277	na	277	70%
2012	na	431	na	431	70%
2013	na	452	na	452	70%
2014	na	440	na	440	70%
2015	na	410	na	410	70%
2016	na	350	na	350	70%
2017	na	321	na	321	70%
2018	na	328	na	328	70%

Year	BP Stat Rev 2018	
	Crude oil & NGL Mb	Natural Gas Bcf
1965	445	
1966	550	
1967	633	
1968	949	
1969	1,134	
1970	1,225	10
1971	1,004	24
1972	821	95
1973	807	152
1974	569	137
1975	553	155
1976	720	160
1977	769	169
1978	738	172
1979	781	228
1980-2018	dataset 1980-2018 below	
2018	345	198
2017	326	182
2016	418	203
2015	502	231
2014	551	239
2013	545	225
2012	500	226
2011	504	224
2010	502	227
2009	508	232
2008	519	225
2007	508	211
2006	488	216
2005	516	216
2004	496	216
2003	475	246
2002	511	249
2001	565	251
2000	599	258
1999	624	259
1998	621	266
1997	628	415
1996	564	447
1995	566	552
1994	169	165
1993	512	311
1992	450	300
1991	175	584
1990	147	547
1989	142	550
1988	298	505
1987	347	490

70% of Libya
Nations Encycl.
Million tonnes/yr
157.4
interpolated
interpolated
interpolated
75.2
interpolated
interpolated
interpolated
99.6

Total		31,113	17,627		12,475	8,617	
--------------	--	---------------	---------------	--	---------------	--------------	--

US Energy Information Administration, International Energy Statistics								Vented & Flared of					
Updated June 2019		www.eia.gov/emeu/international/energy.html		Libya		Libya		Libya		Libya		Libya	
Crude oil, condensate, & NGPL		k bbl per day		million bbl per yr		Gross NatGas Prod		Prod Market Gas		Reinjected NatGas		Dry NatGas Prod	
						Bcf per year		Bcf per year		Bcf per year		Bcf per year	
										%			
1980	1,827	667	NA	NA	NA	NA	161	180					
1981	1,175	429	NA	NA	NA	82	110						
1982	1,190	434	NA	NA	NA	102	120						
1983	1,135	414	NA	NA	NA	68	140						
1984	1,124	410	NA	NA	NA	44	162						
1985	1,085	396	NA	NA	NA	28	180						
1986	1,064	388	NA	NA	NA	25	198						
1987	1,002	366	NA	NA	NA	28	189						
1988	1,205	440	NA	NA	NA	91	194						
1989	1,185	433	NA	NA	NA	118	212						
1990	1,410	515	572	239	155	31%	177	219					
1991	1,523	556	550	252	168	24%	130	231					
1992	1,473	538	503	260	166	15%	76	239					
1993	1,402	512	438	246	131	14%	61	225					
1994	1,419	518	442	247	132	14%	63	226					
1995	1,430	522	440	245	132	14%	63	224					
1996	1,450	529	446	248	135	14%	64	227					
1997	1,506	550	456	253	137	14%	65	232					
1998	1,450	529	445	246	135	15%	65	225					
1999	1,379	503	325	205	74	14%	46	184					
2000	1,470	537	358	233	88	10%	37	212					
2001	1,429	521	365	230	87	13%	48	218					
2002	1,384	505	366	232	87	13%	48	219					
2003	1,486	542	451	207	218	6%	26	194					
2004	1,583	578	585	316	237	5%	32	285					
2005	1,740	635	771	434	125	12%	91	399					
2006	1,865	681	956	722	128	11%	105	466					
2007	1,931	705	1,032	810	119	10%	103	540					
2008	1,943	709	1,070	807	125	13%	139	562					
2009	1,836	670	1,034	793	126	11%	115	562					
2010	1,850	675	1,069	825	120	12%	123	594					
2011	522	191	348	277	25	13%	46	277					
2012	1,549	565	619	430	49	22%	139	431					
2013	1,045	381	608	430	41	19%	115	452					
2014	577	211	623	430	25	25%	158	440					
2015	514	188	592	430	25	27%	157	410					
2016	501	183	NA	NA	NA	NA	NA	350					
2017	932	340	NA	NA	NA	NA	NA	321					
2018	1,075	392	NA	NA	NA	NA	NA	321					

328 revise with updated EIA data assumed equal to 2017 * (BP 2018/2017)
Updated June 2019 (dry gas, EIA stat to 2017)

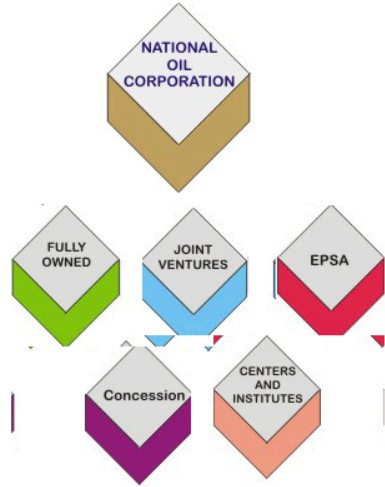
1990-2011 totals	13,022	8,329	2,849	13%	1,723	6,757
------------------	--------	-------	-------	-----	-------	-------



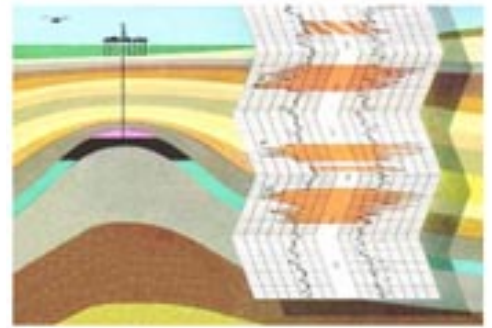
en.noclibya.com.ly, NOC In Brief.



OUR COMPANIES



en.noclibya.com.ly, "Our Companies."



en.noclibya.com.ly, NOC In Brief.



https://noc.ly/index.php/en/

Cell: I9**Comment:** Rick Heede:

"The National Oil Corporation (NOC) was established on 12 November 1970 , under Law No: 24/1970, replacing the general Libyan Petroleum Corporation which established under Law No. 13 of 1968 to assume the responsibility of the oil sector operations."
 NOC is carrying out exploration and production operation through its own affiliated companies, or in participation with other companies under service contracts or any other kind of petroleum investment agreements . This is in addition to marketing operations of oil and gas, locally and abroad . For this purpose, NOC has its own fully owned companies which carry out exploration, development and production operations, in addition to local and international marketing companies. NOC also has participation agreements with specialized international companies. Such agreements have developed into exploration and production sharing agreements, in accordance with the development of the international oil and gas industry, and international petroleum marketing .
 NOC owns refining, and oil and gas processing companies, operating refineries such as Zawia and Ras Lanuf refineries, ammonia, urea and methanol plants, the Ras Lanuf petrochemical complex and the gas processing plant. To establish petrochemical industries, another stage of development of the ethylene plant has been completed, as well as the low and high density linear polyethylene plants.
 "NOC in Brief", at www.noclibya.com.ly (12Dec11).

Cell: M9**Comment:** Rick Heede:

100 percent government owned. World Bank (2008b) A Citizen's Guide to National Oil Companies, Part B: Data Directory, World Bank, Washington, & Center for Energy Economics, Bureau of Economic Geology Jackson School of Geosciences University of Texas, Austin, 764 pp.

Cell: F26**Comment:** Rick Heede:

We have no information on Libya NOC's equity production or details of production sharing agreements with international operators (such as Turkish Petroleum, BP, Eni, and others). Until detailed information is available, we use a ownership stake of 51 percent starting when international oil company assets were nationalized in 1973 and rising to a 70 percent stake in 1977 through 2010. This factor may significantly under-estimate Libya's stake in the country's oil production and will be revised if more detailed information on working interest production becomes available.
 The Oil & Gas Journal estimates for 1987-2010 appear to reflect total Libyan production, not Libya NOC's, and we do not use the O&GJ data (reproduced in column L).

Cell: E28**Comment:** Rick Heede:

Libya oil production 1961-1969 from US Bureau of Mines (1971), International Petroleum Encyclopedia, p. 37. CAI uses BoM data for 1961 to 1964.
 Nigerian oil production for 1965 through 1979 from BP Statistical review of World Energy 2019, with revised data 1965-2018.

Cell: J34**Comment:** Rick Heede:

We assume that Libya's equity production (through production sharing agreements, concessions, and royalties) was 51 percent upon Libya's nationalization of international production assets in 1973, and rising to 70 percent percent 1977-2010.
 The Oil & Gas Journal estimates for 1987-2010 appear to reflect total Libyan production, not Libya NOC's, and we do not use the O&GJ natural gas data (reproduced in column M).

Cell: O34**Comment:** Rick Heede:

According to the UN, "As of 2002, the NOC had an overall share of more than 70% in the oil industry." Nations' Encyclopedia; see cell note in column M. CMS applies this percentage to all of Libya's crude oil production from the year of industry nationalization in 1970 to 1986; thereafter CMS uses Oil & Gas Journal O&GJ200 production estimates for Libya NOC for 1987 - 2008..

Cell: H35**Comment:** Rick Heede:

U.S. Bureau of Mines, Minerals Yearbook 1970, page 764, gross and marketed production 1968-1970. Note: "no marketed production reported."

Cell: B37**Comment:** Rick Heede:

BP operations in Libya were nationalized in 1970, and other producers that did not agree to a government production share of 51 percent were also nationalized.

Cell: H37**Comment:** Rick Heede:

Total net worldwide crude oil plus natural gas liquids produced by each company or state-owned enterprise. Where data is available, we list gross production (before royalty production is netted out). More often, however, oil companies report production net of royalty production.
 Crude production includes natural gas liquids (NGL) unless noted.

Cell: H39**Comment:** Rick Heede:

U.S. Bureau of Mines Minerals Yearbook 1974, page 887, reports both gross and marketed production for 1972-1973.

Cell: B40**Comment:** Rick Heede:

The government of Libya negotiated an immediate 51 percent equity share in 1973. Stevens, 2012, page 181.

Cell: G40**Comment:** Rick Heede:

The government of Libya negotiated an immediate 51 percent equity share in 1973. Stevens, 2012, page 181.
 See Stevens, Paul (2012) "Saudi Aramco: the jewel in the crown," in Victor et al, eds, Oil and Governance, pp. 173-233, Cambridge Univ. Press, 1034 pp.

Cell: H41**Comment:** Rick Heede:

U.S. Bureau of Mines Minerals Yearbook 1976, page 887, reports both gross and marketed production for 1974-1976. Note: "Includes gas reinjected to reservoirs, if any."

Cell: L54**Comment:** Rick Heede:

Oil & Gas Journal data for 1987-2004, Libya National Oil Corporation.

Cell: L76**Comment:** Rick Heede:

OGJ100 6Sep2010 pg 69;
 OGJ 3 Oct 2011 pg 49

Cell: M76**Comment:** Rick Heede:

OGJ100 6Sep2010 pg 69;
 OGJ 3 Oct 2011 pg 49

Cell: M134**Comment:** Rick Heede:

EIA gas production data for Libya not available

Cell: O187**Comment:** Rick Heede:

Intentionally left blank

Page intentionally left blank